

// CONFINED SPACE



AVALON ARE HIGHLY TRAINED AND EQUIPPED FOR CONFINED SPACE WORK. COMPREHENSIVE HAZARD MANAGEMENT, UTILISING FORCED VENTILATION, GAS DETECTION AND EXTRACTION EQUIPMENT.

Client sectors include; power generators, dairy factories, tourism and consulting engineers. Rigorous hazard identification and assessment is carried out and all necessary safety systems are in place before entry. Rescue recovery systems are rigged and tested before entry.

// EXPERIENCE

Works completed include underground investigation, tunnelling and accessing of inspection shafts.

Contracting and structural investigations in vessels, pipes, penstocks and tunnels.

// RANGE OF EQUIPMENT

AVALONS full range of confined space access equipment includes;

Tripods

Gas Detectors

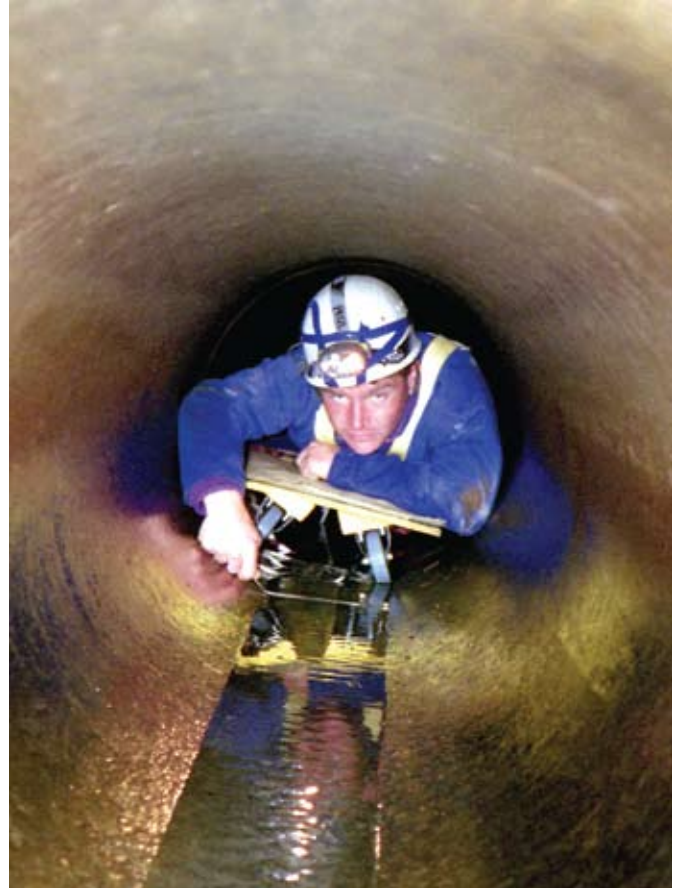
Hauling and Recovery Systems

Specialised Lighting

Forced Ventilation Equipment

Tank Access Beams

Access Trolleys



ABOVE. Internal inspection of 5km of concrete pipe, Ruapehu.



ABOVE LEFT. Dairy vessel inspection, Tirau.



ABOVE RIGHT. Connection tunnel breakthrough, Ruakuri Cave.



ABOVE. Access to lighting tower, Waikato Stadium.

// AVALON RAPID MOBILISATION SERVICE

24 HR CALL NUMBER 07 846 1686